

Cynomolgus APRIL/TNFSF13 Trimer Protein

Cat. No. APR-CM410



Description

Source	Recombinant Cynomolgus APRIL/TNFSF13 Trimer Protein is expressed from HEK293 with His tag and Flag tag and Avi tag at the N-Terminus.
	It contains Lys112-Leu250 trimer design.
Accession	A0A2K5TJA1
Molecular Weight	The protein has a predicted MW of 52.1 kDa. Due to glycosylation, the protein migrates to 55-65 kDa based on Bis-Tris PAGE result.
Endotoxin	Less than 1 EU per µg by the LAL method.
Purity	> 95% as determined by Bis-Tris PAGE
	> 95% as determined by HPLC

Formulation and Storage

Formulation	Lyophilized from 0.22 µm filtered solution in 50 mM Tris, 150 mM NaCl, 200 mM L-arginine (pH 8.0). Normally 8% mannitol is added as protectant before lyophilization.
Reconstitution	Dissolve the lyophilized protein in distilled water. Please refer to the Certificate of Analysis for detailed instructions.
Storage	-20 to -80°C for 12 months as supplied from date of receipt. -80°C for 3 months after reconstitution. Recommend to aliquot the protein into smaller quantities for optimal storage. Please minimize freeze-thaw cycles.

Background

The APRIL (a proliferation-inducing ligand), also known as TNFSF13, TALL2, TRDL1, and CD256, is a member of the TNF ligand superfamily. Both APRIL and its close relative BAFF bind and signal through the TNF superfamily receptors TACI and BCMA, while BAFF additionally functions through BAFFR.

Assay Data

Bis-Tris PAGE



Cynomolgus APRIL Trimer on Bis-Tris PAGE under reduced condition. The purity is greater than 95%.

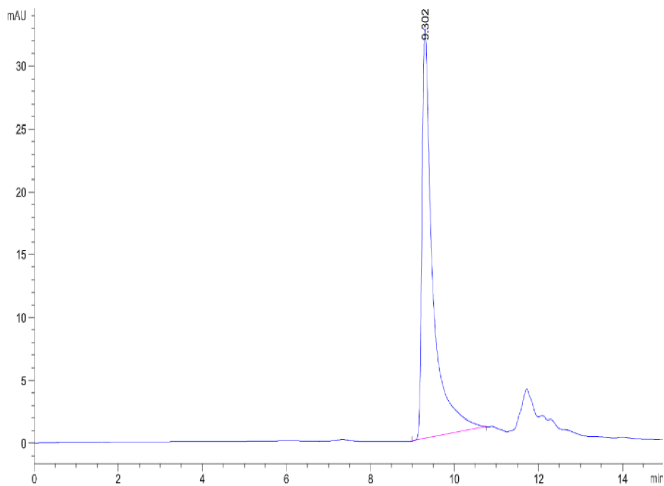
SEC-HPLC

Cynomolgus APRIL/TNFSF13 Trimer Protein

Cat. No. APR-CM410



Assay Data

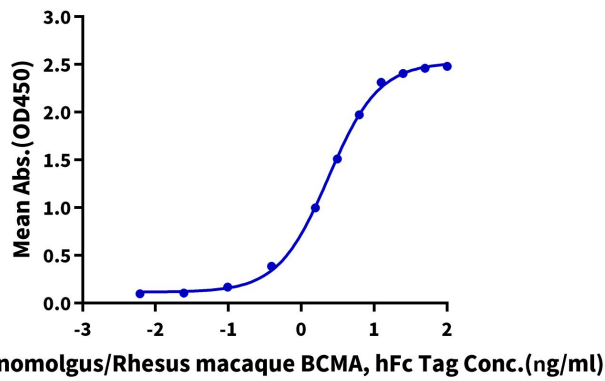


The purity of Cynomolgus APRIL Trimer is greater than 95% as determined by SEC-HPLC.

ELISA Data

Cynomolgus APRIL (Trimer), His Tag ELISA

0.1µg Cynomolgus APRIL (Trimer), His Tag Per Well



Immobilized Cynomolgus APRIL (Trimer), His Tag at 1 µg/ml (100 µl/well) on the plate. Dose response curve for Cynomolgus/Rhesus macaque BCMA, hFc Tag with the EC50 of 2.4 ng/ml determined by ELISA (QC Test).